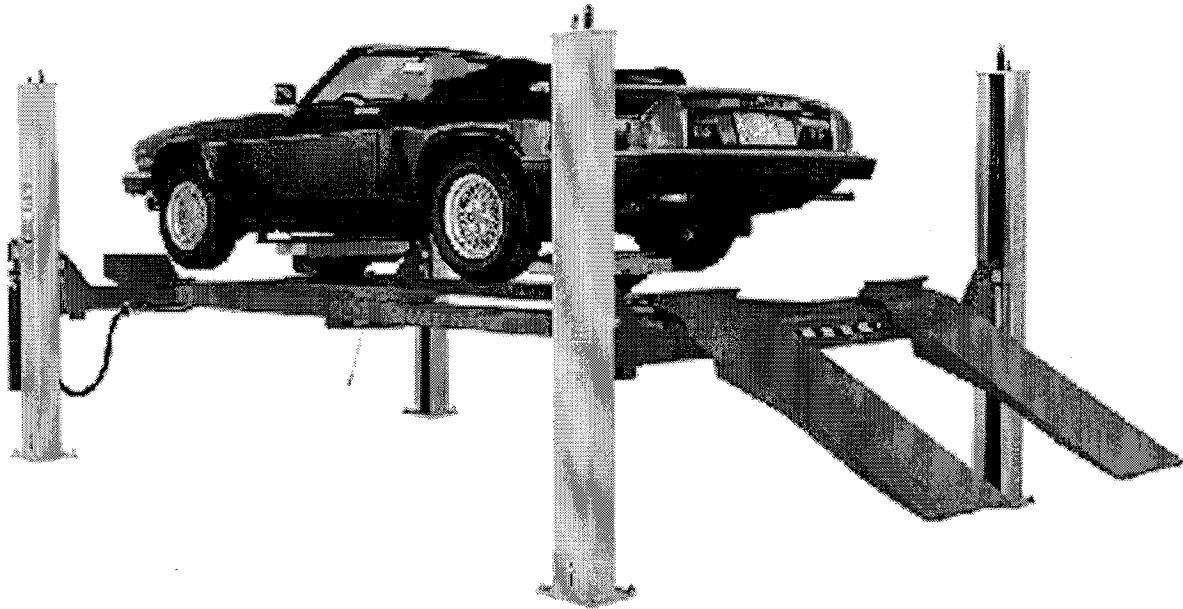


742

WHEELTRONIC LTD.

**INSTALLATION and
OPERATION MANUAL**



4 POST
(MOT IV)
4540KG. (10,000 LB.)

**READ and SAVE THIS
INSTRUCTION MANUAL**

APR. 2000 6-1785

WHEELTRONIC LTD.

6500 Millcreek Drive
Mississauga, Ontario, Canada
L5N 2W6
Phone: 1-800-268-7959
Fax: 905-826-7800

THE FOLLOWING APPLIES TO ALL LIFTS

IMPORTANT SAFETY INSTRUCTIONS

1. Read all instructions.
2. Care must be taken as burns can occur from touching hot parts.
3. Do not operate the lift with a damaged cord or if the lift has been damaged - until it has been examined by a qualified service person.
4. Never allow the cord to be positioned under the lift or in an area where it could get crushed or come in contact with hot or moving parts.
5. If an extension cord is necessary, a cord with a current rating equal to or more than that of the lift should be used. Cords rated for less amperage than the lift may overheat. Care should be taken to arrange the cord so that it will not be tripped over or pulled.
6. Never unplug the lift from the electrical outlet during operation. Always disconnect power when not in use. Never yank the cord to pull plug from outlet. Grasp plug and pull to disconnect.
7. To protect against the risk of fire, do not operate lift in the vicinity of open containers of flammable liquids.
8. Adequate ventilation should be provided when working on internal combustion engines.

SAVE THESE INSTRUCTIONS

TABLE OF CONTENTS

PAGE

1 GENERAL SPECIFICATIONS3

2 TOOLS REQUIRED FOR INSTALLATION3

3 CONTENTS4

4 INSTALLATION INSTRUCTIONS6

4.1 CABLE INSTALLATION10

4.2 POWER PACK INSTALLATION12

4.3 ELECTRICAL CONNECTIONS13

4.4 HYDRAULIC AND AIR KITS INSTALLATIONS14

4.5 LEVELING PROCEDURE - CABLES15

4.6 ANCHOR INSTALLATION17

4.7 LEVELING PROCEDURE - SAFETY LADDERS18

4.8 TOE GUARD INSTALLATION19

5 SAFETY AND OPERATING INSTRUCTIONS20

6 RECOMMENDED MAINTENANCE21

7 PARTS MANUAL22

7.1 LIFT ASSEMBLY23

7.2 PARTS LIST24

7.3 HYDRAULIC AND AIR KITS26

7.4 PARTS LIST- HYDRAULIC AND AIR KIT27

7.5 CABLE ROUTING28

7.6 PARTS LIST - CABLE ROUTING29

7.7 POWER PACK30

7.8 POWER PACK PART LIST31

7.9 FRONT AND REAR TOE GUARD PARTS32

7.10 TOE GUARDS PARTS LIST33

8 LIFT MAINTENANCE GUIDELINES34

1 GENERAL SPECIFICATIONS

Maximum Capacity:	10000 lbs.	4540 kg
Overall Length:	197 3/8"	5013mm
Overall Width:	125"	3175mm
Down Position Height:	Floor Level	Floor Level
Maximum Lifting Height (from ground):	61.5"	1562mm
Maximum Wheel Base:	144"	3658mm
Power Requirements:	380 Volts AC, 3Ph., 50Hz.	
Shipping Weight:	2850 lbs.	1293kg

CHECK CONTENTS OF ACCESSORY BOX WITH THE PACKING LIST ENCLOSED

2 TOOLS REQUIRED FOR INSTALLATION

- ROTARY HAMMER DRILL
- 3/4" CONCRETE DRILL BIT
- SOCKET FOR TIGHTENING ANCHORS
- 4'(1m) LEVEL
- HAMMER (for anchor installation)
- PRY BAR (for shim installation)
- CHALK LINE (lift location)
- FISH (mechanics wire to feed cable through crossmember assembly)
- TAPE MEASURE
- ELECTRICAL TAPE
- STEP LADDER (adjusting cables and/or safety ladder in posts)
- SIDE CUTTERS (for cutting shipping straps)
- BAR - 4'(1m) long
- 4 WORK STANDS (set up)
- STANDARD SOCKETS AND WRENCHES

IMPORTANT: Lifts must only be installed on level concrete floors. Please refer to "C30" Standard for minimum floor specifications.

3 CONTENTS

The lift is packaged to prevent any damage that may occur during shipping. The two deck assemblies and crossmembers are packaged together with the accessory boxes strapped to them.

Main Structural Components:

- 1 - Left Side Deck Assembly (complete with hydraulic cylinder)
- 1 - Right Side Deck Assembly
- 1 - Front Crossmember Assembly (with air cylinder release locks and sheaves)
- 1 - Rear Crossmember Assembly (with air cylinder release locks and sheaves)

Accessory Box Components

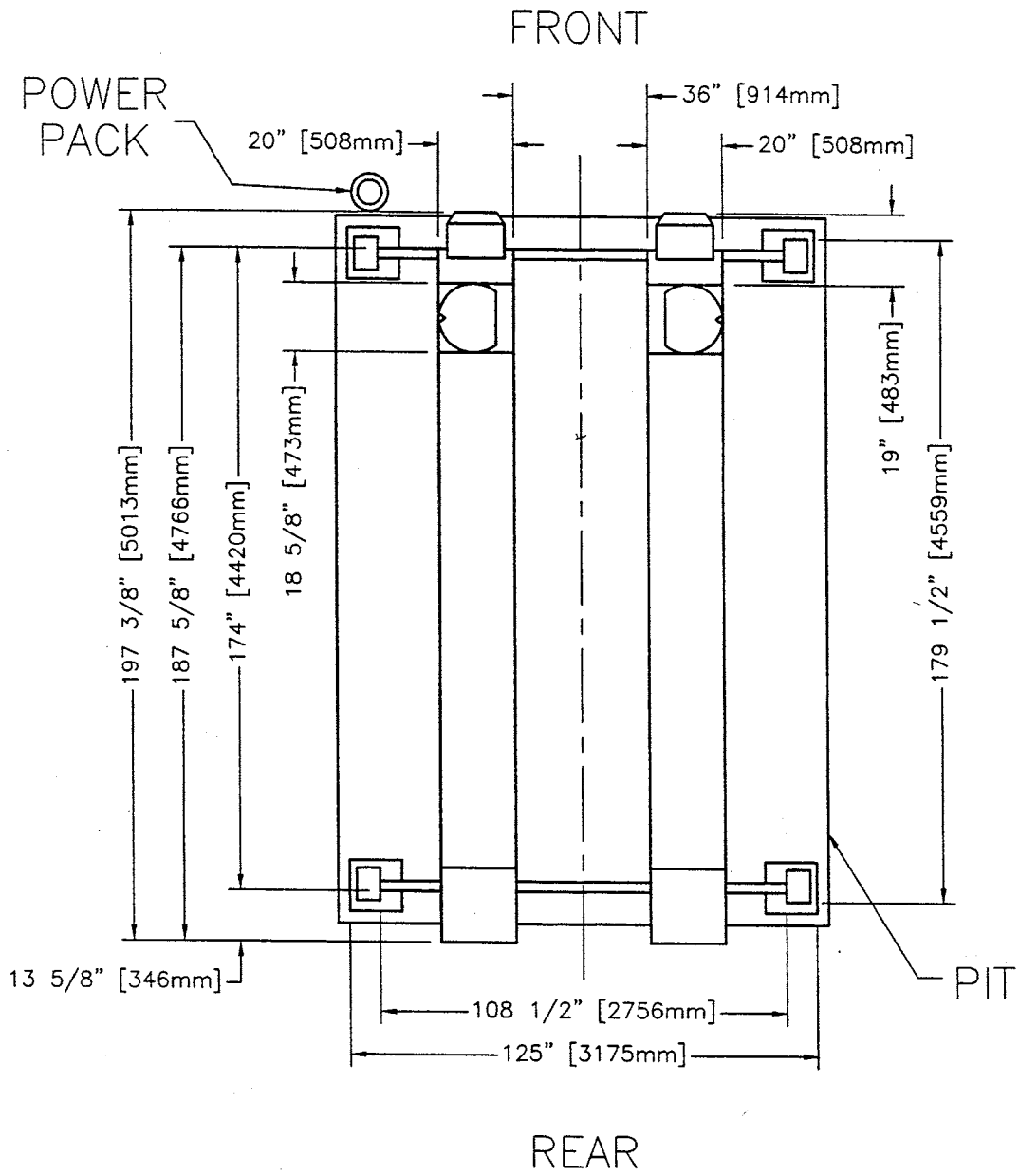
Box 1 Contents:

- 1 - Power Post (with safety ladder)
- 3 - Post (with safety ladder)

Box 2 Contents:

- 1 - Power Pack Assembly complete with Flow Control
- 2 - Flushmount Approach Ramps
- 7 - Sheave Assemblies
- 1 - Set of Cables (set contains 4 cables with nuts and spacers)
- 7 - Sheave Spacers (different sizes)
- 2 - Front Wheel Stops
- 2 - Ramp Pins
- 4 - Deck Sheave Pins
- 1 - Air Kit (with 1/4" and 3/8" polytube and fittings)
- 1 - Hydraulic Hose (with fittings)
- 1 - Hose Guard
- 4 - Sheave Covers
- 3 - Cable Tie (for attachment of hydraulic hose to cylinder)
- 2 - Recoiled Air Hoses 12' long
- 1 - Coupler 1/4" NPT
- 1 - Package of Hardware (with its own packaging list)
- 1 - Rear Toe Guard
- 1 - Owner's manual
- 1 - ALI manual "Lifting It Right"
- 1 - Automotive Lift Safety Tips
- 1 - Automotive Lift, Operation, Inspection and Maintenance manual

Figure 1



4 INSTALLATION INSTRUCTIONS

PLEASE TAKE THE TIME TO READ THESE INSTRUCTIONS COMPLETELY. A QUICK CHECK OF THE CONTENTS OF THE ACCESSORY BOX WOULD ALSO DECREASE THE OVERALL TIME OF THE INSTALLATION.

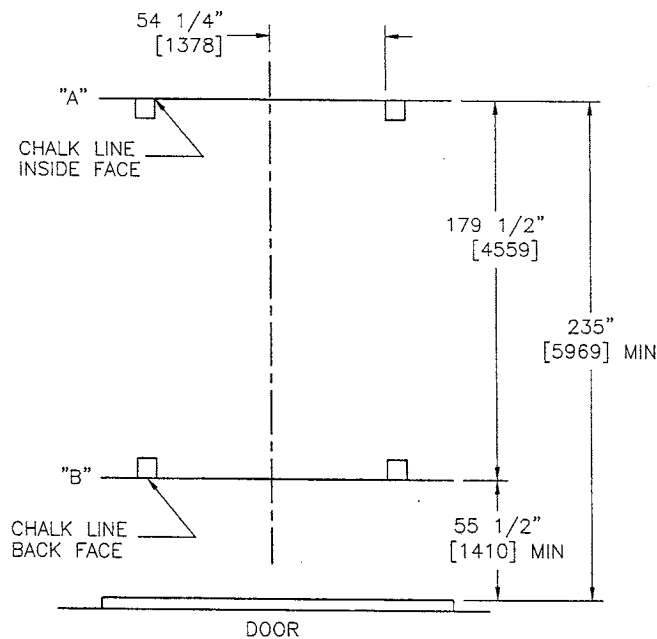
1. Gather the tools and materials required for the installation.
2. Select the location best suited for your lift.

NOTE: In determining lift area, check for the following:

- Ease of driving a vehicle on and off the lift.
- Overhead obstructions, low ceiling height, overhead doors, overhead heaters, etc.
- Floor obstructions, uneven floor in lift area, floor drains, workbenches, electrical wiring in floor, etc.

3. An outline matching the dimensions listed below will need to be marked on the floor. Refer to **Figure 2** for outline dimensions. Refer to General Lift Specifications for overall lift dimensions. **Figure 1.**

CHALK LINE LAYOUT - FIGURE 2



Refer to **Figure 2**. Make a chalk line parallel to the doorway at least 235”(5969mm) in from the doorway. This will be the furthest front face of the front post location. Call this line “A”. Determine the center of the doorway and bay. Make a centerline to intersect with line “A”. Measure from the centerline along line “A” 54 1/4”(1378mm) in both directions. This will be the location of the inside face and front face of the front posts. Measure back from this line “A” 179 1/2”(4559mm). Make a chalk line parallel to line “A”. Call this line “B”. This will be the location for the back face of the rear posts. Measure from the centerline along line “B” 54 1/4”(1378mm) in both directions. This will be the location of the inside face and back face of the rear posts. Position work stands inside of line “A” and “B” of outline, to support the front and rear of each deck assembly.

IMPORTANT

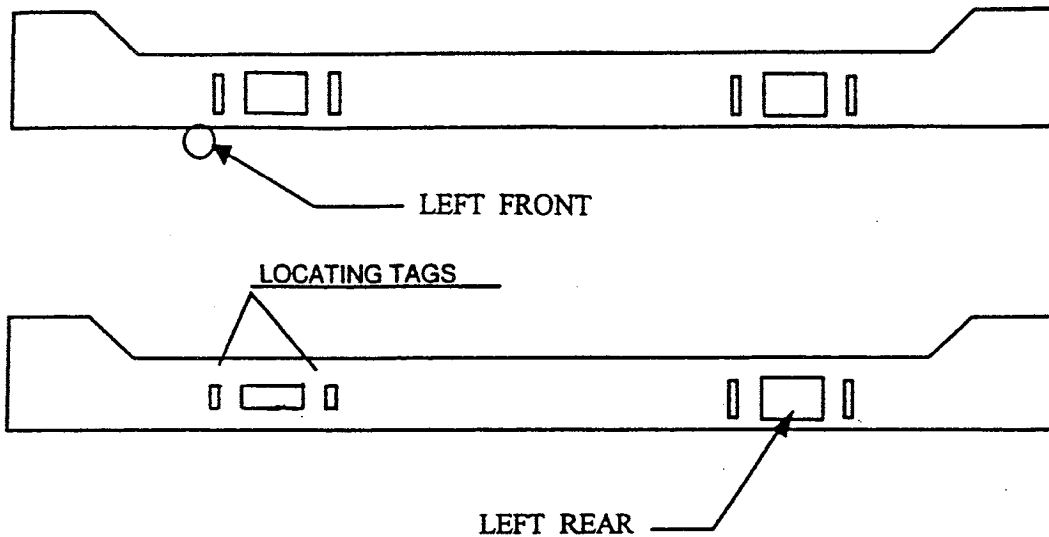
NOTE: To determine the front, rear, left side and right side of the decks, check the following:

4. The left deck has the hydraulic cylinder mounted to its underside. The rear of each deck as approach ramp brackets to install the drive on approach ramps. The work steps, attached to the turn plate pocket cutouts will face towards the front outside of the lift.
5. Position decks on work stands.

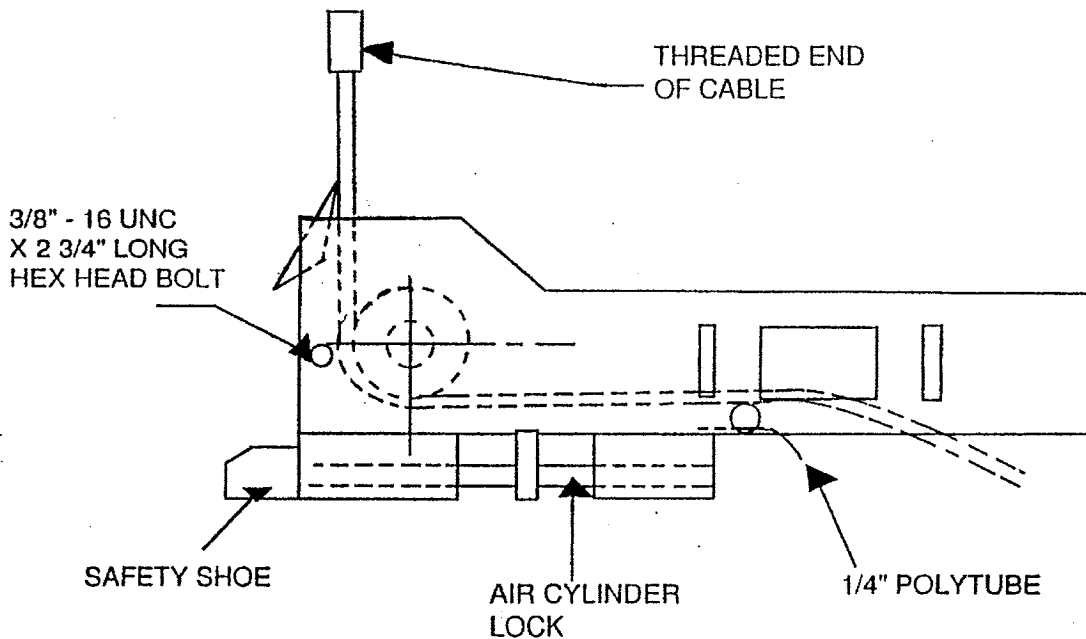
NOTE: To determine the front and rear crossmember assemblies, see **Figure 3**, and check the following:

6. The front crossmember assembly will have two (2) small openings for cable routing. The openings will face the rear of the lift.
7. The rear crossmember assembly will have one (1) small opening and one (1) larger opening for cable routing. These openings will face the front of the lift.
8. The crossmember assemblies are fully assembled and the PULLEYS DO NOT NEED TO BE REMOVED FOR CABLE INSTALLATION. ALIGN CROSS-MEMBER ASSEMBLIES SO THAT THE DIAGONALS MEASURE WITHIN HALF AN INCH SQUARE.
9. Install the crossmember assemblies under the front and rear of each deck assembly. The decks will fit inside the locating tabs of the crossmember assemblies. Install eight (8) ½”-13 UNC × 1” lg. set screws to hold the decks to the crossmember assemblies. One set screw to the front and rear of each deck and one set screw into the four outer locating tabs on the front and rear crossmember assemblies.
10. Reposition work stands under front and rear crossmember assemblies.

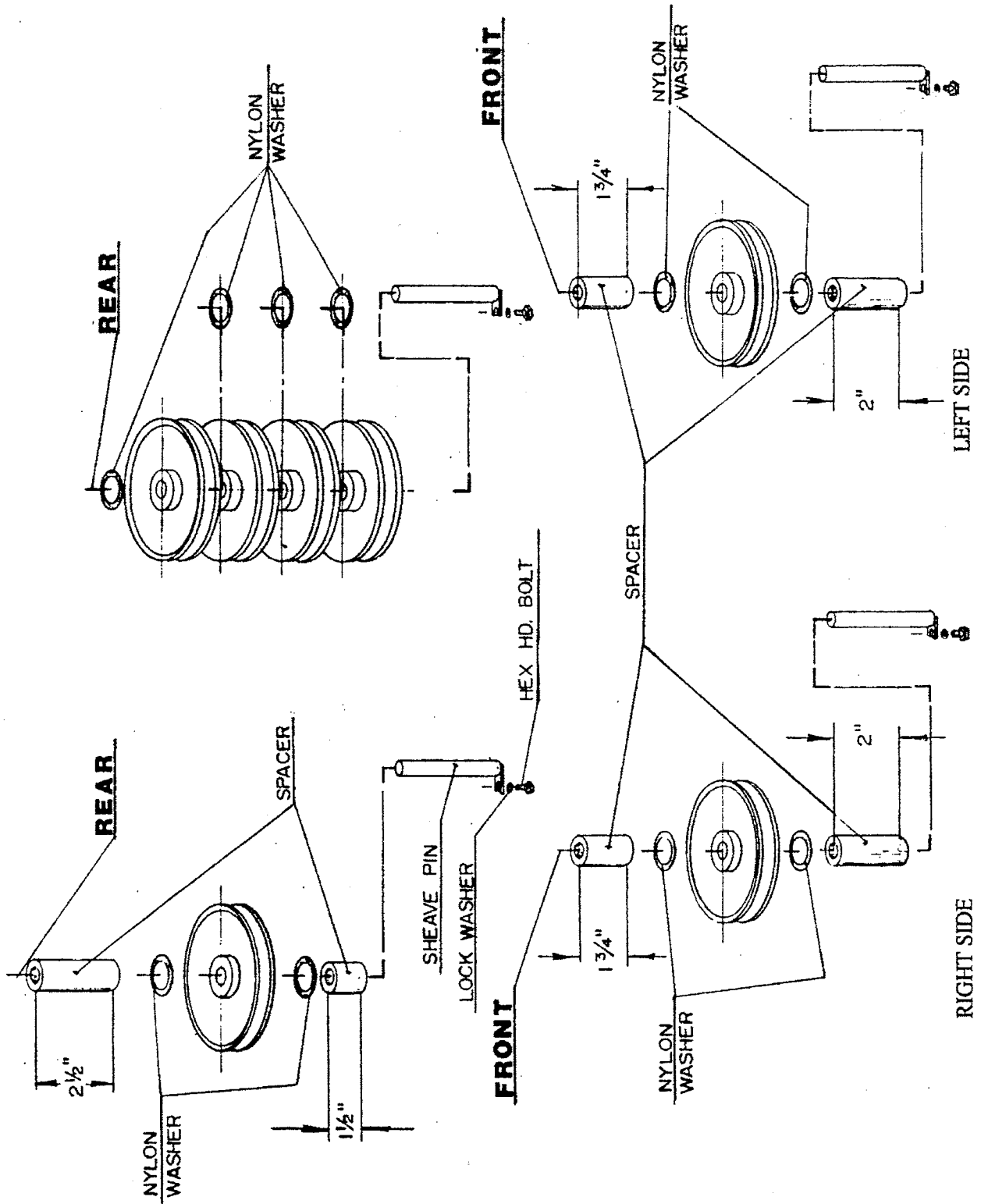
FRONT AND REAR CROSSMEMBER ASSEMBLY
FIGURE 3



CABLE AND ROUTING IN CROSSMEMBER ASSEMBLY TYPICAL
FIGURE 4



SHEAVES INSTALLATION
FIGURE 5



4.1 CABLE INSTALLATION

1. Locate the cables and lay them out on the floor. Check part numbers located on each stud of each cable.

CABLE #1.....PART #2-0943 (314" lg. - L.F.)

CABLE #2.....PART #2-0944 (144" lg. - L.R.)

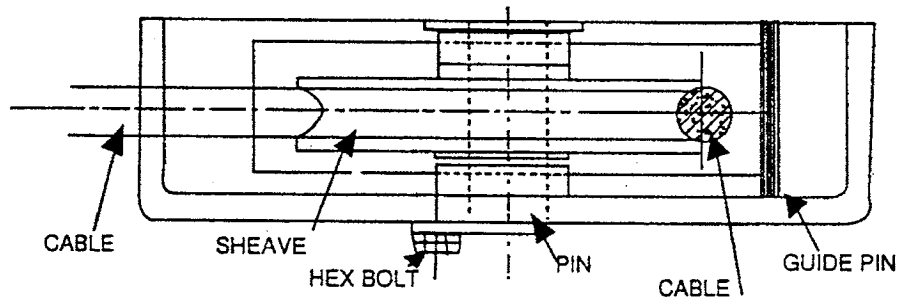
CABLE #3.....PART #2-0945 (194" lg. - R.R.)

CABLE #4.....PART #2-0946 (364" lg. - R.F.)

NOTE: THE PULLEYS (SHEAVES) ON THE CROSSMEMBERS DO NOT HAVE TO BE REMOVED FOR CABLE INSTALLATION. A 3/8"-16 UNC × 2 3/4" LG. HEX HEAD BOLT MUST BE REMOVED FROM THE CROSSMEMBERS TO ALLOW CABLE INSTALLATION AROUND THE PULLEYS. THIS 3/8"-16 UNC × 2 3/4" LG. HEX HEAD BOLT MUST BE REINSTALLED AFTER THE CABLES ARE ROUTED THROUGH THE CROSSMEMBER ASSEMBLIES.

2. Before beginning cable routing, refer to **Figure 4**, Cable and Routing Diagram.
3. Begin routing cable #4 (part #2-0946) from the right side of the front crossmember assembly using the non threaded end of the cable as described in **Figure 4**, and out through the opening under the front of the right deck.
4. CHECK FOR CORRECT ARRANGEMENT OF SPACERS ON SHEAVE STACKS, **FIGURE 5**.
5. Install the sheave into the front of the right deck as shown in **Figure 5**.

NOTE: MAKE CERTAIN THAT THE CABLE RUNS BETWEEN THE WELDED GUIDE PIN AND THE GROOVE IN THE PULLEY.



**SHEAVE STACK
FIGURE 6**

NOTE: Typical deck sheave arrangement. Left and right front deck shown; cable must run between the welded guide pin and the groove in the sheave. Left and right front spacers have equal top and bottom sizes.

NOTE: Similar arrangement for sheave stack. Right deck rear spacer sizes are not equal, the larger one goes on top of stack.

6. Continue to pull cable #4 over the center support of the right deck.
7. Begin routing cable #3 (Part # 2-0945) from the right rear crossmember assembly using the non threaded end of the cable as described in **figure 4**, and out through the crossmember assembly to the opening under the rear of the right deck.

TIP: TAPE THE TWO CABLES TOGETHER, CABLE #3 ON TOP OF CABLE #4. THIS WILL KEEP THE TWO CABLES FROM TWISTING IN THE REAR CROSSMEMBER ASSEMBLIES.

8. Continue to feed cables #3 and #4 through the rear crossmember assembly and out of the opening under the rear of the left deck.
9. Install the sheave into the rear of the right deck as shown in **figure 5**.
10. Route cable #2 (Part # 2-0944) from the left side of the rear crossmember assembly using the non threaded end of the cable as described in **figure 4**, and out through the crossmember assembly to the opening under the rear of the left deck.
11. Route cable #1 (Part # 2-0943) from the left side of the front crossmember assembly using the non threaded end of the cable as described in **figure 4**, and out through the crossmember assembly to the opening under the front of the left deck.
12. Install the sheave into the front of the left deck as shown in **figure 5**.

NOTE: MAKE CERTAIN THAT ALL CABLES ARE IN THE RIGHT POSITIONS AND ARE NOT TWISTED. VERIFY THAT ALL FOUR (4) OF THE 3/8"-16 UNC x 2 3/4" LG. HEX HEAD BOLTS ARE REINSTALLED ON THE CROSSMEMBER ASSEMBLIES.

13. Install the sheave stack assembly at the rear of the left deck as shown in **figure 5**, Sheave Installation.

NOTE: ALL POSTS HAVE SAFETY RACKS ALREADY INSTALLED. THE LEFT FRONT POST WILL HAVE A MOUNTING BRACKET FOR THE POWER PACK INSTALLATION.

14. Stand posts into position according to **figures 1** and **2**.
15. Install the threaded stud end of the cables through the top of the post. Use a 7/8" flat washer, and two (2) 7/8"-14 UNF hex nuts with cable spacers as required, to compensate for uneven floors.

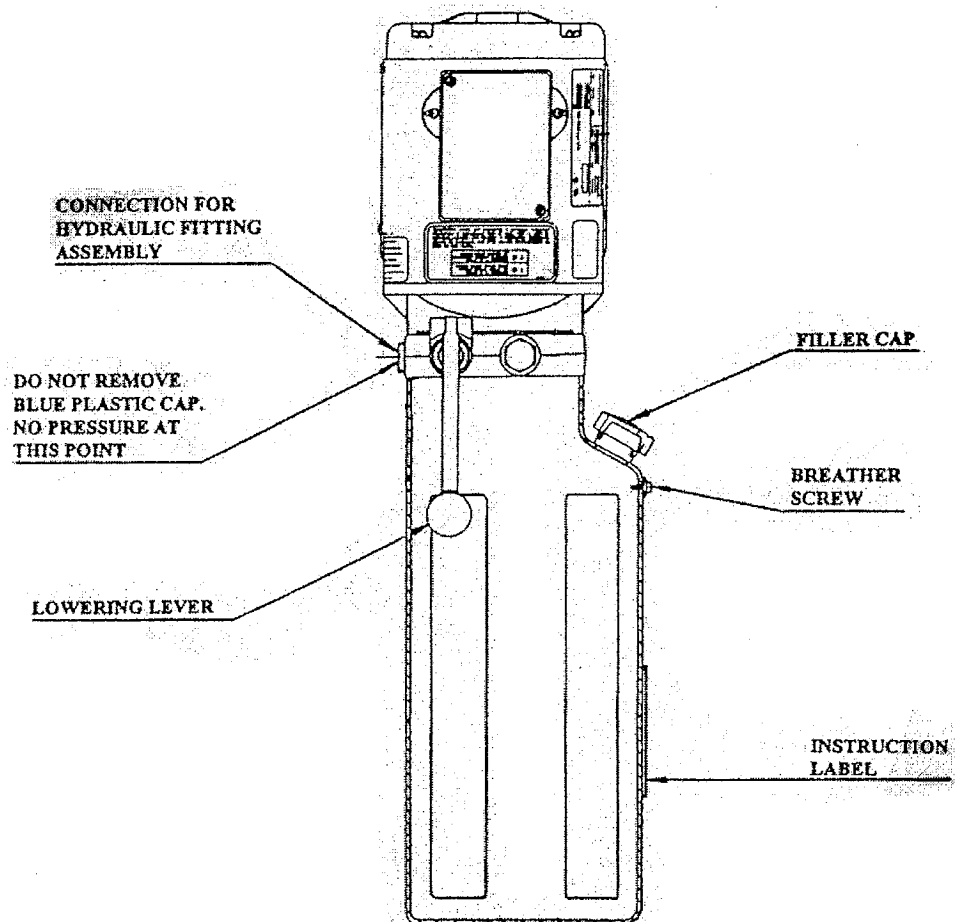
NOTE: Hydraulic cylinder is precharged with hydraulic fluid. Install power pack and hydraulic hose before attempting to extend cylinder rod for cable installation.

4.2 POWER PACK INSTALLATION

1. Bolt the power pack to the mounting bracket on the front face of the left front post using four (4) 5/16"-18UNC x 1"LG. hex head bolts four 5/16" lockwashers, and four 5/16" hex nuts. Refer to **Figure 7**.

NOTE: WHEN WORKING WITH HYDRAULIC LINES AND VALVES, IT IS IMPORTANT TO KEEP ALL COMPONENTS CLEAN AND FREE OF DIRT.

**POWER PACK DETAILS
FIGURE 7**



4.3 ELECTRICAL CONNECTIONS

CAUTION: ALL ELECTRICAL CONNECTIONS SHOULD BE MADE BY A QUALIFIED ELECTRICIAN.

Please refer to **Figure 8**, Electrical Diagram for 380 volts/three phase, electrical connections.

Electrical Breaker Size Recommendation: 10Amps per line

Electrical Diagram for 380V/3ph.

FOUR POST 380V/3PH./50Hz. (CE)

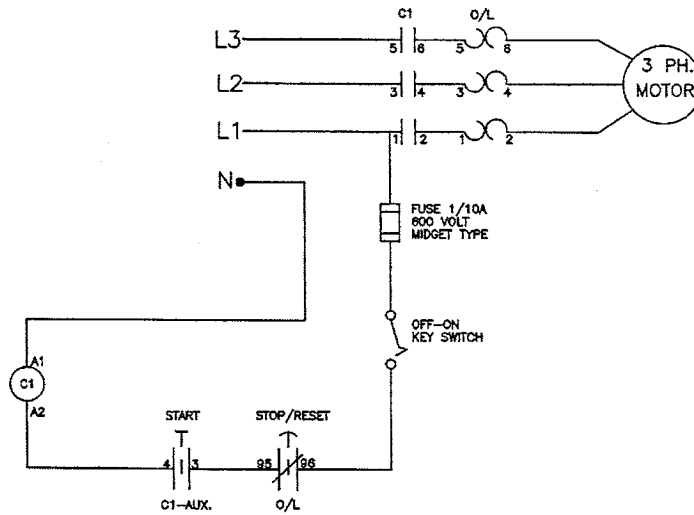


FIGURE 8

NOTE: THE CYLINDER ROD MUST BE EXTENDED IN ORDER TO INSTALL THE NON-THREADED END OF THE CABLES TO THE CABLE FLANGE ON THE ROD.

- Remove the hydraulic cap from the fitting at the base of the hydraulic cylinder.
- Use an air chuck and blow air into the fitting in the breather hole in the base of the cylinder to extend the rod.

NOTE: AS ROD EXTENDS, OIL FROM CYLINDER RETURNS TO POWER PACK.

- Continue to extend the rod until the non-threaded end of the cables are reached.
- Remove the clamp from the cable flange.
- Install the cables as shown in **Figure 4**, Cable and Routing Diagram.
- Reinstall the clamp to the cable flange.

4.4 HYDRAULIC AND AIR KITS INSTALLATIONS

1. Locate the supply lines: 1/4" and 3/8" polytube, 3/8" flexible hydraulic line, and the black plastic piping.
2. Install the black plastic piping to the steel pipe welded to the underside of the front left side crossmember assembly.

HYDRAULIC INSTALLATION

1. Refer to Parts Manual, and Hydraulic and Air Kit Diagram

TIP: TAPE ONE END OF THE HYDRAULIC HOSE TO THE TWO POLYTUBES AND FEED THEM THROUGH THE BLACK PLASTIC PIPING. THEN REMOVE THE TAPE.

2. Connect 3/8" JIC, M end of the flexible hydraulic hose to the fitting at the cylinder.

DO NOT OVER TIGHTEN.

3. Install flow control assembly.
4. Attach the other end 3/8" JIC, F of the flexible hydraulic hose to the adapter fitting on the power pack (3/8" JIC, M).

AIR INSTALLATIONS

1. The air valve assembly is factory installed, and is found on the outside face of the left front post protected by the mounting bracket.

NOTE: MOST OF THE 1/4" AND 3/8" POLYTUBE CONNECTIONS HAVE BEEN MADE IN THE CROSSMEMBERS ASSEMBLIES AND LEFT DECK. ONLY FINAL CONNECTIONS ARE REQUIRED. THE 1/4" POLYTUBE WILL BE USED FOR THE AIR CYLINDER LOCKS AND THE 3/8" POLYTUBE WILL BE USED FOR THE AIR OUTLETS TO THE JACKING BEAMS.

CAUTION: DO NOT OVER TIGHTEN CONNECTORS.

2. Connect all of the 1/4" polytubes, coming out of the black plastic piping at the left front crossmember assembly, to the bolted manifolds at the front and rear of the left deck.
3. Connect the opposite end of the 1/4" polytube, coming out of the black plastic piping, to the air valve on the outside face of the left front post.

4. Connect the 3/8" polytube, coming out of the black plastic piping at the left front crossmember assembly, to the 3/8" polytube fitting located under the front inside of the left deck.
5. Connect the opposite end of the 3/8" polytube, coming out of the black plastic piping, to the air valve outlet on the outside face of the left post.

NOTE: FOR THOSE UNITS EQUIPPED WITH JACKING BEAMS, THIS WOULD BE THE TIME TO INSTALL THEM. CONSULT THE JACKING BEAM INSTRUCTIONS MANUAL FOUND IN EACH JACK BEAM BOX.

6. Hook up an air supply to the inlet of the water trap on the air valve assembly located on the outside of the left post. Check for air leaks.
7. Check the operation of the air cylinder locks by depressing the air valve on the outside of the left front post.
8. Press the "UP" button on the hydraulic power pack. Continue raising until it is supported by cables.

NOTE: MAKE CERTAIN THAT THE MECHANICAL SAFETY LOCKS AND CABLE ROLLERS ARE WORKING PROPERLY.

4.5 LEVELING PROCEDURE - CABLES

NOTE: A 4'(1m) level is required. Adjust the cables to level the decks side-to-side and front-to-rear. All cable adjustments can be made at the threaded end of the cable at the top of each of the four (4) posts.

1. Tighten the two (2) 7/8"-14 UNF hex nuts on each cable at the top of each post.
2. Raise the lift to check operation.
3. To lower, first raise lift off safety stops then lower lift by depressing the air valve while pulling down on the release lever of the power pack.
4. Remove hand from air valve and allow the lift to hang on the cables.
5. Use a 4'(1m) level to square and level all four posts.
6. Begin leveling the highest post. **Figure 9.**

POST LEVELING

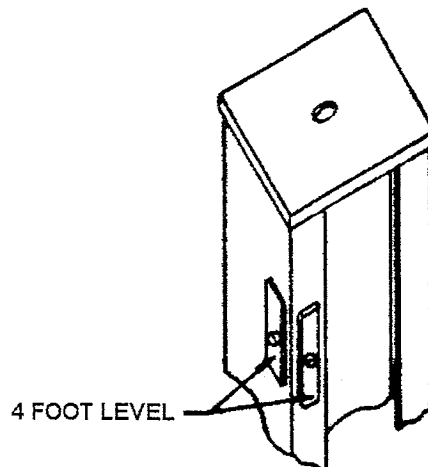


FIGURE 9

NOTE: MAKE CERTAIN THAT THE SAFETY RACK IN EACH OF THE POSTS IS SQUARE TO THE CROSSMEMBER ASSEMBLY AND THAT A MINIMUM CLEARANCE OF 1/8" (3mm) IS MAINTAINED BETWEEN THE INSIDE FACE OF THE POSTS AND THE PLASTIC GUIDES ON THE CROSSMEMBER ASSEMBLY.

CAUTION: USE THE CORRECT WEDGE ANCHOR BOLTS. (SUPPLIED)

DECK LEVELING

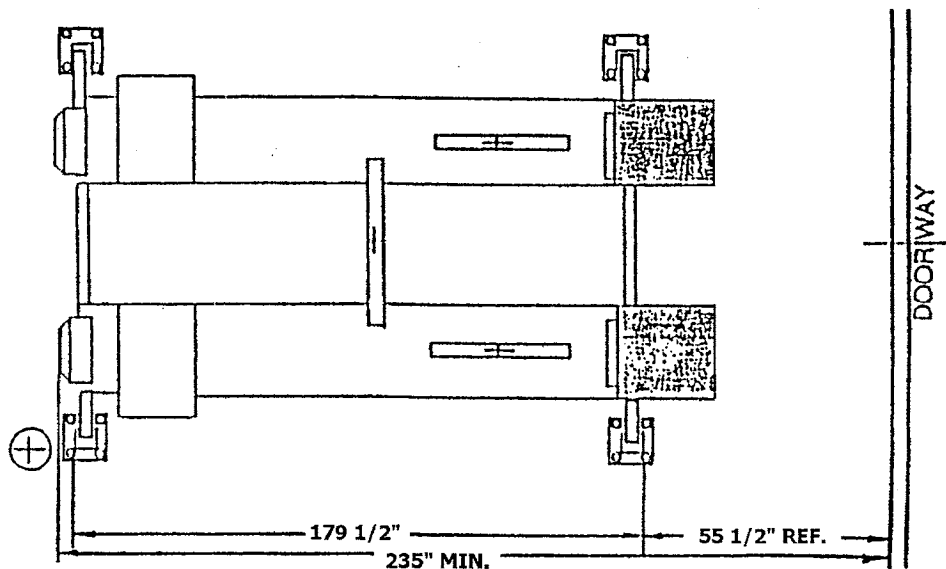


FIGURE 10

NOTE: Check and adjust the decks for level using the 4' (1m) level. Both the front plate cut-outs and rear steer plates should be checked.

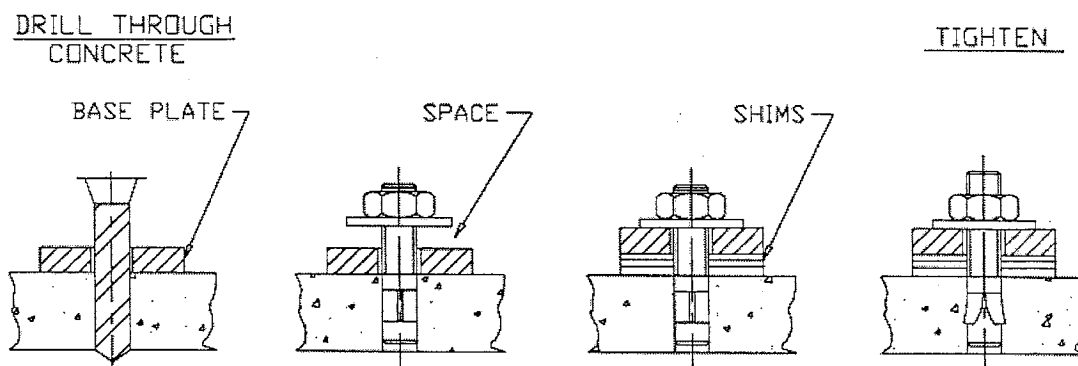
4.6 ANCHOR INSTALLATION

1. The 3/4" × 5 1/2" lg. wedge anchor bolts supplied allow for the thickness of the base plates plus a maximum of 1"(25mm) of shim stock. **DO NOT USE ANCHORS SUPPLIED IF MORE THAN 1"(25mm) OF SHIM STOCK IS USED.**
2. Recheck all measurements before anchoring posts.

NOTE: First anchor the power post, and then work clockwise.

3. Using a 3/4" concrete drill bit and rotary hammer drill, drill through the concrete floor in the four (4) anchor bolt location holes positioned on the base of each post.

**ANCHOR INSTALLATION
FIGURE 11**



4. Tighten all anchor bolts to a torque of 150 ft. lbs (200Nm).
5. Recheck and adjust the level of post(s) and cable(s) if necessary.

NOTE: IN CASES WHERE THE FLOOR IS EXTREMELY OUT OF LEVEL, THE MECHANICAL SAFETIES MAY NOT ENGAGE ON THE SAME LOCK.

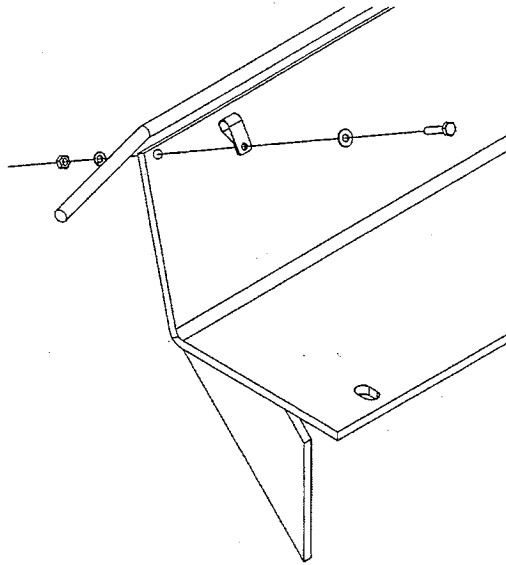
4.7 LEVELING PROCEDURE - SAFETY LADDERS

1. After the lift has been leveled on the cables, adjust the safety racks.
2. To check the mechanical safety locks, raise the lift up; make sure all locks engage at the same time making one noise. If the safeties are off slightly, gently bump the up button until you hear the first safety lock engage. Determine at which post the safety engaged; adjust each of the other safety racks until you hear the safety engage. Recheck to make certain that the safeties are engaging together.
3. To do this loosen the 3/8"-16 UNC \times 1" lg. hex bolt at the bottom back of each post and pull safety racks up until they come into full contact with each of the safety shoes on the crossmember assembly.
4. When level, tighten the two (2) 5/8"-11 UNC hex nuts at the top of each safety rack and the 3/8"-16 UNC \times 1" lg. hex bolts at the bottom back of each post.
5. Raise the lift to check for full operating height of 71". This measurement is taken from the top of the decks to the floor.
6. Install the approach ramps using ramp pins, cotter pins, and ramps provided. Ensure the proper operation of the ramps.
7. Install the front wheel stops using six (6) 1/2"-13 UNC \times 1" lg. hex bolts and six 1/2" lockwashers.
8. Install the four (4) sheave covers over the sheaves in the crossmember assembly.
9. Cycle the lift several times to check proper operation of the cables, safety lock, air locks, etc...

STOP IMMEDIATELY IF THE LIFT IS NOT OPERATING PROPERLY.

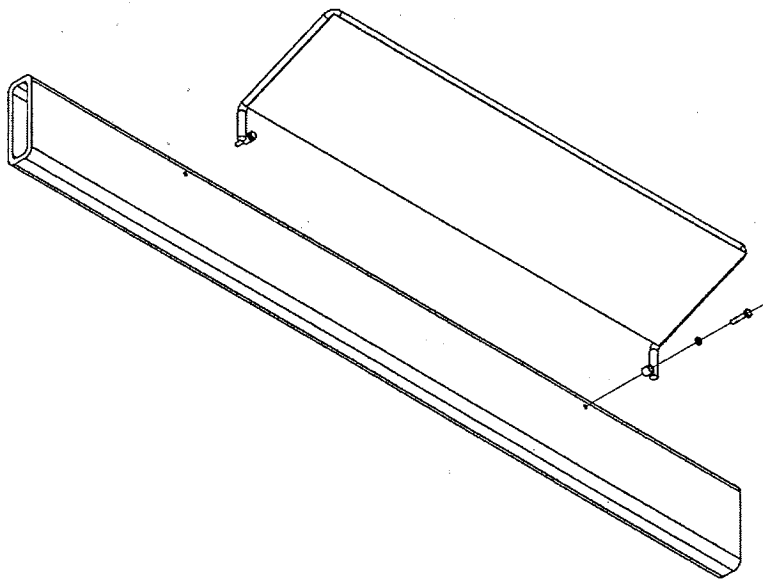
Adjust and recheck for proper operation.

4.8 TOE GUARD INSTALLATION



FRONT TOE GUARD
FIGURE 12

1. Attach front toe guard to front of wheel stops as shown in **Figure 12**. See **TOE GUARD PARTS** in parts manual for components.



REAR TOE GUARD
FIGURE 13

1. Rear toe guard fastens to rear crossmember between flushmount approach ramps as shown in **Figure 13**. See **TOE GUARD PARTS** in parts manual for components.

5 SAFETY AND OPERATING INSTRUCTIONS

1. **Inspect** your lift daily. Do not operate it if malfunctions occur or damaged parts have been found.
2. **Never** attempt to overload the lift. The manufacturer's rated capacity is shown on the serial number tag on the power post.
3. **Operating controls, DO NOT OVERRIDE** the safeties. The mechanical safeties are designed to engage automatically on the way up. Press the up switch of the power pack to go up. When the desired height is reached, lower onto the safety. To lower, raise off of the safety locks, then press the air release valve and the lowering release lever at the same time.
4. **Only trained** and authorized personnel should operate the lift. Do **not** allow customers or bystanders to operate the lift or be in the lift area.
5. **Caution**, never work under the lift unless the mechanical safety locks are engaged.
6. **Before** driving vehicle on, make sure lift is in the fully down position.
7. **Before** removing the vehicle from the lift, make sure the lift is in the fully down position and ensure that all tools have been removed from the deck surfaces.
8. **Always** keep the lift area free from debris. Grease and oil spills should always be cleaned up immediately. **Never** leave any tools or parts laying on the decks.
9. **Never** operate lift with passengers in vehicle.

NOTE: DO NOT ATTEMPT TO OPERATE THIS LIFT IF ANY PART IS NOT WORKING PROPERLY OR YOU HAVE NOT READ THE COMPLETE OPERATING INSTRUCTION MANUAL.

6 RECOMMENDED MAINTENANCE

DAILY

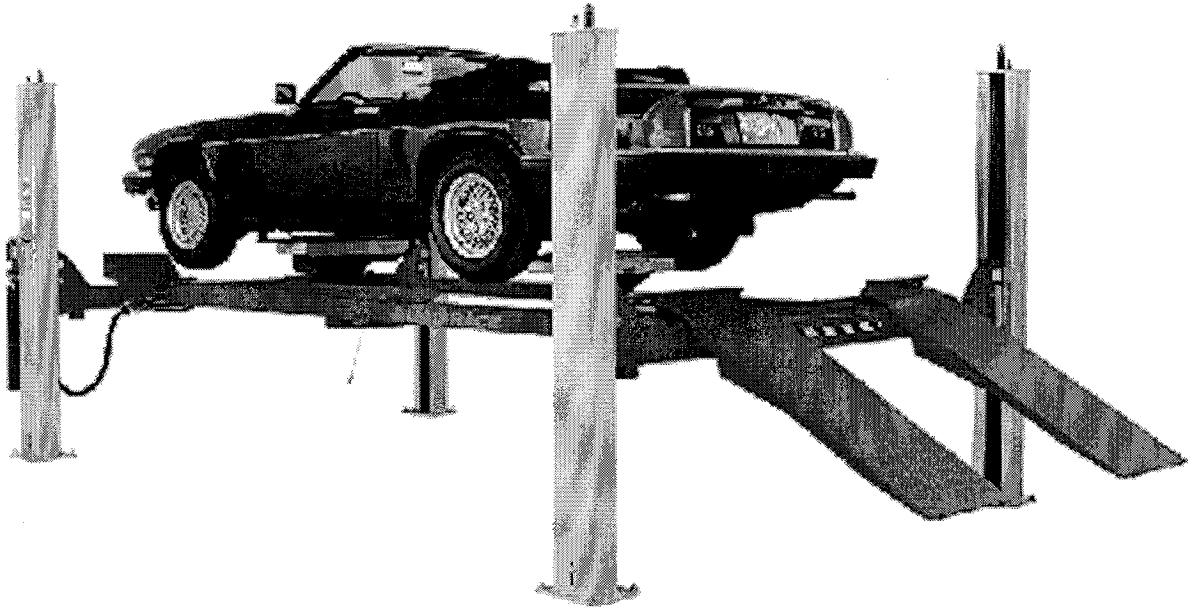
1. Check general operation of lift.
2. Check operations of mechanical safety locks.
3. Check operation of air release valve for air leaks.
4. Check operation of cables and pulleys.
5. Check and drain water trap filter bowl.

MONTHLY

1. Check anchor bolts (if loose re-torque to 150 ft. lbs.). Replace concrete if anchors continue to loosen.
2. Check all air and hydraulic hoses, fittings and cylinders for leaks.
3. Check level of oil in power pack reservoir when lift is in the lowered position. Add if required.
4. Check lifting cables for wear, separation or breaks. If found, replace cables immediately. Lubricate cables with oil or a light grease.
5. Check and adjust cables if lifting is uneven. Make adjustments with weight on lift.
6. Check all fasteners and tighten as required.
7. Check all pulleys on crossmember assembly and under the runways for wear or play. Replace immediately. Pulley pins are held in place by 3/8" - 16UNC x 1"lg. Hex Hd. Bolts. Make certain that these bolts are in position and tight.
8. Check and adjust safety racks if lift is not level on safety, or if safeties do not engage properly.
9. Check and clean full floating rear steer plates. Lubricate with oil or light grease.
10. Lubricate all safety shoes and locks.

WHEELTRONIC LTD.

**EXPLODED VIEW and
PARTS LISTS**



**4 POST
(MOT IV)
4540KG. (10,000 LB.)**

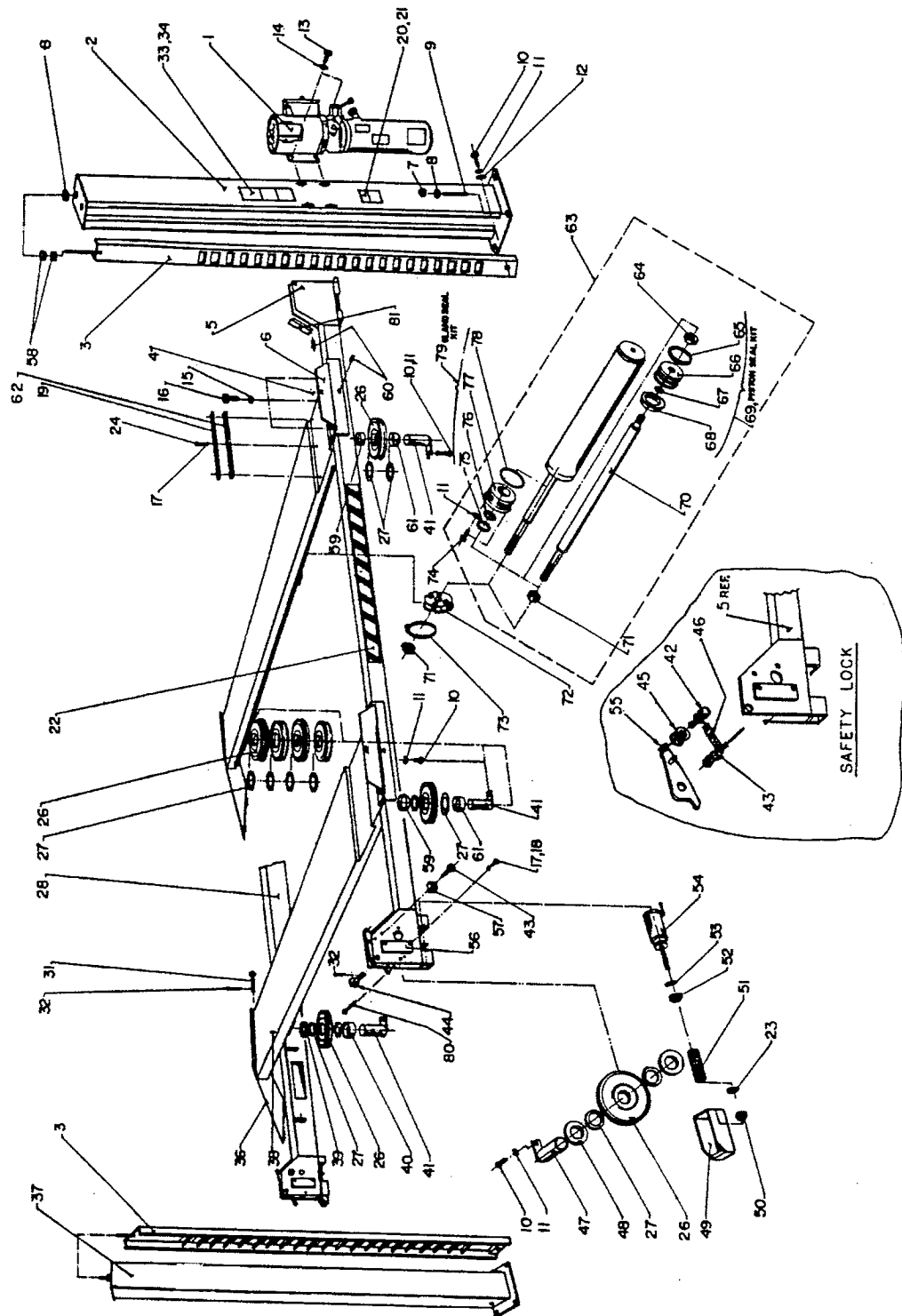
**READ and SAVE THIS
INSTRUCTION MANUAL**

APR. 2000 6-1785

WHEELTRONIC LTD.

6500 Millcreek Drive
Mississauga, Ontario, Canada
L5N 2W6
Phone: 1-800-268-7959
Fax: 905-826-7800

7.1 LIFT ASSEMBLY

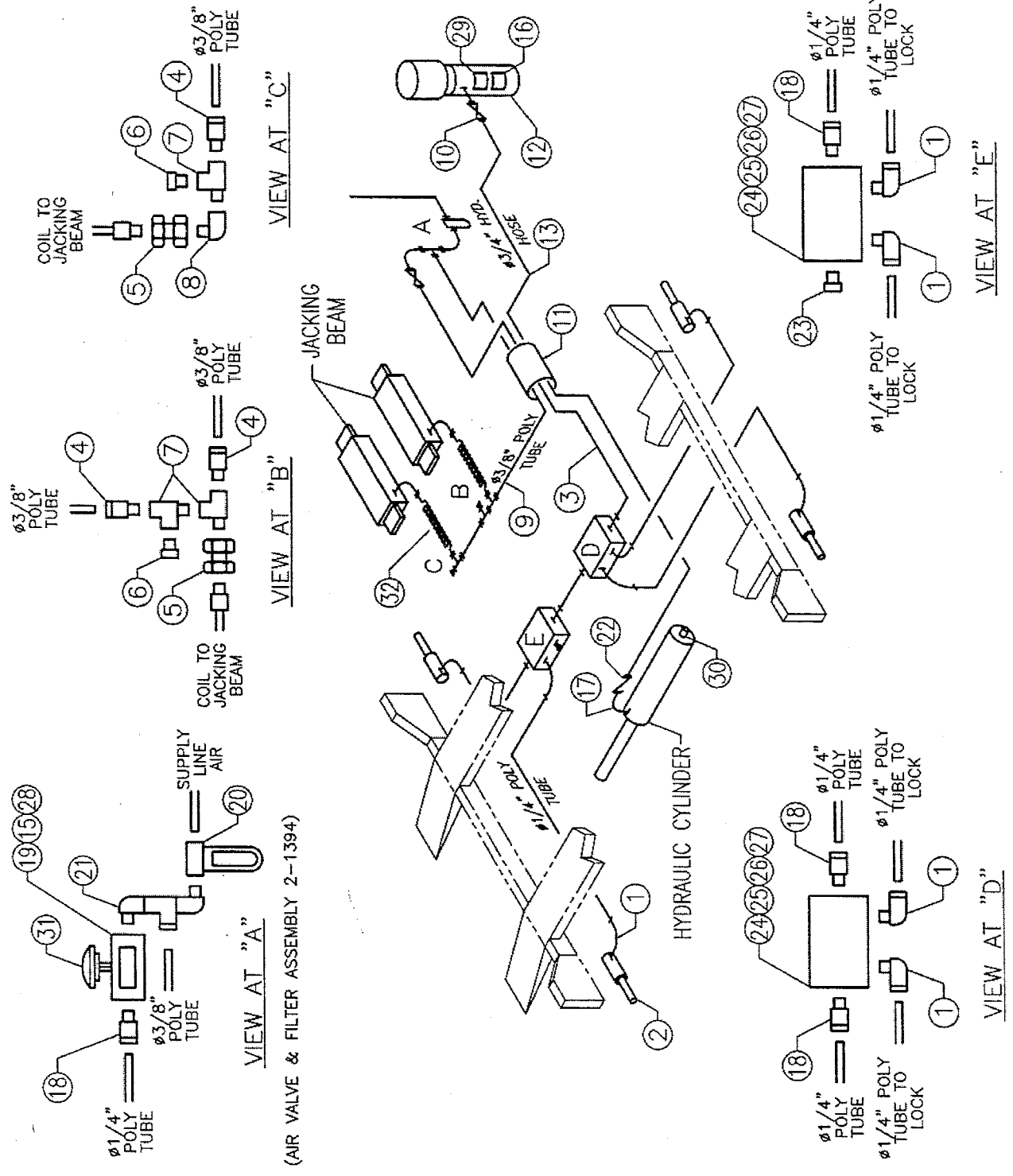


7.2 PARTS LIST

ITEM	QTY.	DESCRIPTION	PART#
1	1	POWER PACK, 380V/3PH/50Hz.	6-2250
2	1	POWER POST	4-0186
3	4	SAFETY RACK	3-0487
4	1	ALIGNMENT DECK WLDMT, (LEFT SIDE)	4-0661
5	1	FRONT CROSSMEMBER WELDMENT	4-0342
6	2	FRONT WHEEL STOP WELDMENT	2-1438
7	16	HEX NUT, 3/4"-10UNC	6-0737
8	20	FLAT WASHER, 3/4" I.D.	6-0738
9	16	WEDGE ANCHOR, 3/4"-10UNC X 5 1/2" LG.	6-1379
10	12	HEX HD. BOLT, 3/8"-16UNC X 1" LG. GR.8	6-0668
11	14	LOCKWASHER, 3/8" I.D.	6-0058
12	4	FLAT WASHER, 3/8" I.D.	6-0062
13	4	HEX HD. BOLT, 5/16"-18UNC X 1" LG.	6-0293
14	4	LOCKWASHER, 5/16" I.D.	6-0674
15	6	LOCKWASHER, 1/2" I.D.	6-0059
16	6	HEX HD. BOLT, 1/2"-13UNC X 1" LG.	6-0045
17	28	LOCKWASHER, 1/4" I.D.	6-0056
18	16	HEX HD. BOLT, 1/4"-20UNC X 3/4" LG.	6-0178
19	4	RETAINING BAR	2-0635
20	1	SERIAL TAG	6-1114
21	1	"ALI/ETL" TAG	6-0996
22	2	"CAUTION" TAPE, (40" LG.)	6-1125
23	8	FLAT WASHER, 1/4" I.D.	6-0060
24	12	HEX HD. BOLT, 1/4"-20UNC X 1 1/4" LG.	6-0027
26	11	SHEAVE ASSEMBLY	2-0557
27	19	NYLON THRUST WASHER	1-0757
28	1	REAR CROSSMEMBER WELDMENT	4-0665
31	2	RAMP PIN	1-0095
32	6	COTTER PIN, 1/8" X 2" LG.	6-0115
33	1	"CAUTION", "SAFETY INS.", & "WARNING" DECAL	6-0988
34	1	"ATTENTION" DECAL	6-1637
36	2	FLUSHMOUNT RAMP WELDMENT	3-0697
37	3	POST	3-0347
38	1	ALIGNMENT DECK WLDMT, (RIGHT SIDE)	4-0667
39	1	SHEAVE SPACER, 2 1/2" LG.	1-0798
40	1	SHEAVE SPACER, 1 1/2" LG.	1-0788
41	4	DECK SHEAVE PIN	2-0566
42	4	SHOULDER BOLT, 3/8" DIA. X 1 1/2" LG.	6-0801
43	12	SHOULDER BOLT, 3/8" DIA. X 3/4" LG.	6-0729
44	4	LOCK SAFETY PIN	1-0769
45	4	CABLE ROLLER	1-0766

ITEM	QTY.	DESCRIPTION	PART#
46	8	TENSION SPRING	1-0768
47	4	CROSSMEMBER SHEAVE PIN	1-0771
48	8	SHEAVE SPACER, 3/8"LG.	1-0786
49	4	SAFETY SHOE WELDMENT	2-0990
50	4	HEX NYLON LOCKNUT, 1/4"-28UNF	6-1563
51	4	COMPRESSION SPRING	1-0767
52	4	HEX NUT, 5/8"-18UNF	6-0662
53	4	INTERNAL TOOTH LOCKWASHER, 5/8" I.D.	6-0663
54	4	AIR CYLINDER, 5 1/2" ROD LG. (SPR-12)	6-0651
55	2	SAFETY LOCK WLDMT. LS	2-0567
	2	SAFETY LOCK WLDMT. RS	2-1475
56	8	PLASTIC BRACKET	1-0775
57	8	PLASTIC GUIDE	1-0776
58	8	HEX NUT, 5/8"-11UNC, GR.8	6-0036
59	2	SHEAVE SPACER, 1 3/4"LG.	1-0799
60	8	SET SCREW, 1/2"-13UNC X 1"LG. GR.8	6-0726
61	2	SHEAVE SPACER, 2"LG.	1-0943
62	4	SPACER BAR	2-0636
63	1	HYDRAULIC CYLINDER	4-0187
64	1	LOCKNUT, 7/8"- 14UNF, NYLON INSERT	6-1160
65	1	WEAR RING	6-0004
66	1	PISTON	2-0564
67	1	"O" RING	6-1305
68	1	PISTON SEAL	6-0003
69	1	PISTON SEAL KIT	0-0169
70	1	PISTON ROD	2-0565
71	2	HEX NUT, 1"-14UNF-2A, GR.8	6-0664
72	1	CABLE FLANGE	2-0561
73	1	CLAMP	6-0665
74	2	HEX HD. BOLT, 3/8"-16UNC X 1 1/4"LG. GR.8	6-0666
75	1	ROD WIPER	6-0653
76	1	ROD SEAL	6-0654
77	1	GLAND	3-0348
78	1	"O" RING	6-0655
79	1	GLAND SEAL KIT	0-0170
80	4	HEX HD. BOLT, 3/8"-16UNC X 2 3/4"LG.	6-0730
81	4	SHEAVE COVER	2-0575

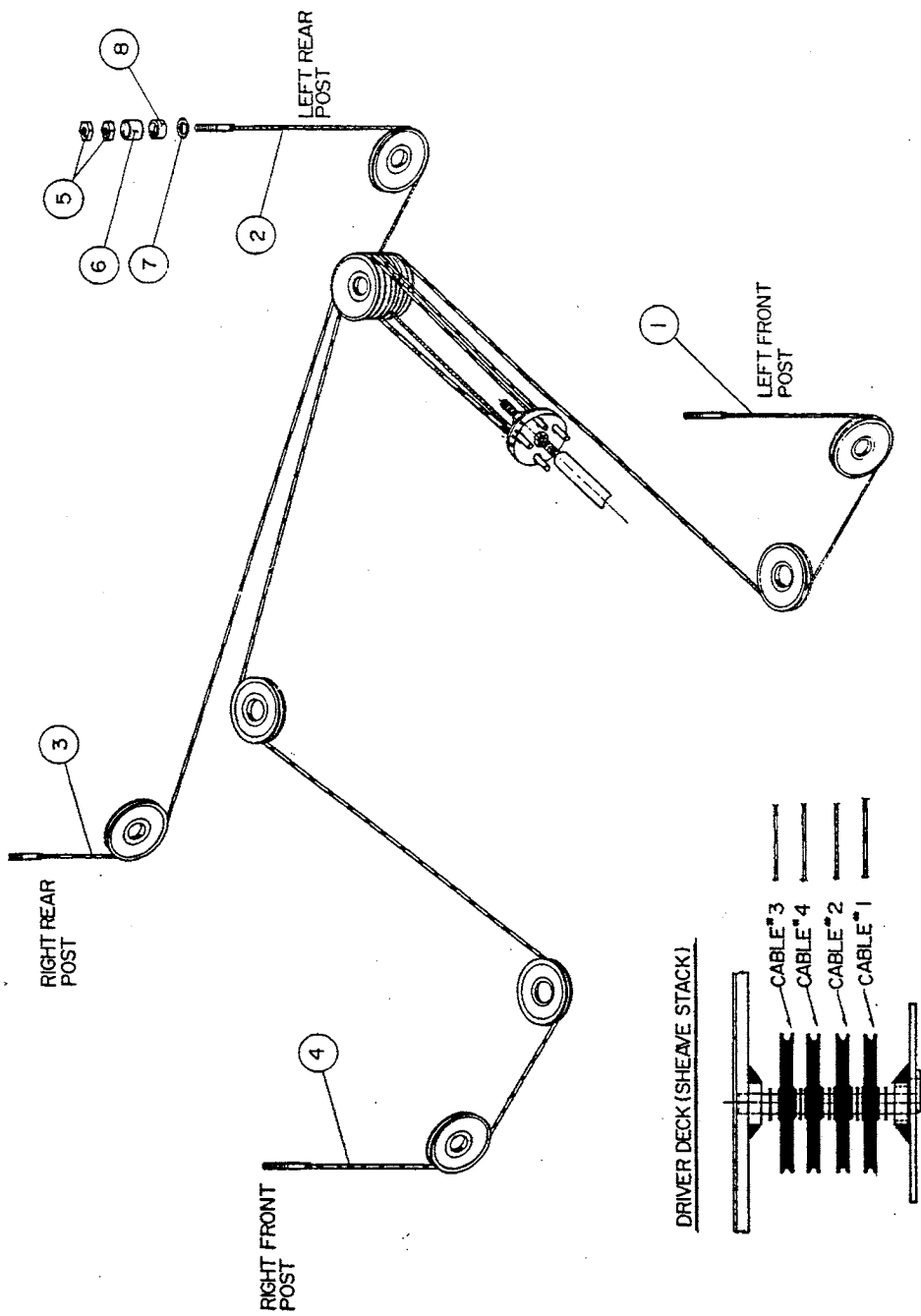
7.3 HYDRAULIC AND AIR KITS



7.4 PARTS LIST- HYDRAULIC AND AIR KIT

ITEM	QTY.	DESCRIPTION	PART #
1	8	90° ELBOW, 1/8" NPT x 1/4" POLYTUBE	6-0709
2	4	AIR CYLINDER	6-0651
3	10FT	1/4" DIA. POLY TUBE	6-1396
4	3	ADAPTER, 3/8" POLY TUBE x 1/4" NPT	6-0710
5	2	TERMINAL BOLT, 3/4"	6-0713
6	2	PLUG, 1/4" NPT	6-0282
7	3	1/4" NPT STREET TEE	6-0014
8	1	1/4" NPT STREET ELBOW	6-0015
9	10FT	3/8" DIA. POLY TUBE	6-1400
10	1	FLOW CONTROL	6-1937
11	4FT	HOSE GUARD	6-0714
12	1	POWER PACK 380V/3 PH/ 50Hz.	6-2250
13	1	HYD.HOSE ASS'Y, 3/8" JIC FEMALE, 16FT LONG	6-1692
14	3	CABLE TIE	6-0731
15	2	HEX NUT, #8-32	6-1095
16	1	"NOTICE" DECAL	6-0594
17	1	90° ELBOW, 1/4" NPT M x 3/8" NPT F	6-0796
18	3	ADAPTER, 1/4" POLY TUBE x 1/8" NPT	6-0708
19	1	AIR VALVE	6-1775
20	1	AIR FILTER	6-0180
21	1	AIR VALVE FITTING KIT	0-0405
22	1	VELOCITY FUSE 8GPM	6-1684
23	1	PLUG, 1/8" NPT	6-0182
24	2	MANIFOLD	1-1057
25	4	HEX HD.BOLT, 1/4"-20UNC X 2" LG	6-0177
26	4	HEX NUT, 1/4"-20UNC	6-0032
27	4	LOCKWASHER, 1/4" I.D.	6-0056
28	2	PHIL. HD. SCREW, #8-32 X 1" LG.	6-1094
29	1	"LIFT OPERATION" DECAL	6-0593
30	1	ADAPTER, 1/8" NPT M X 1/4" JIC M	6-0280
31	1	AIR VALVE PUSHBUTTON	6-1777
32	1	RECOIL HOSE	6-0337
*		AIR VALVE & FILTER ASSEMBLY	2-1394

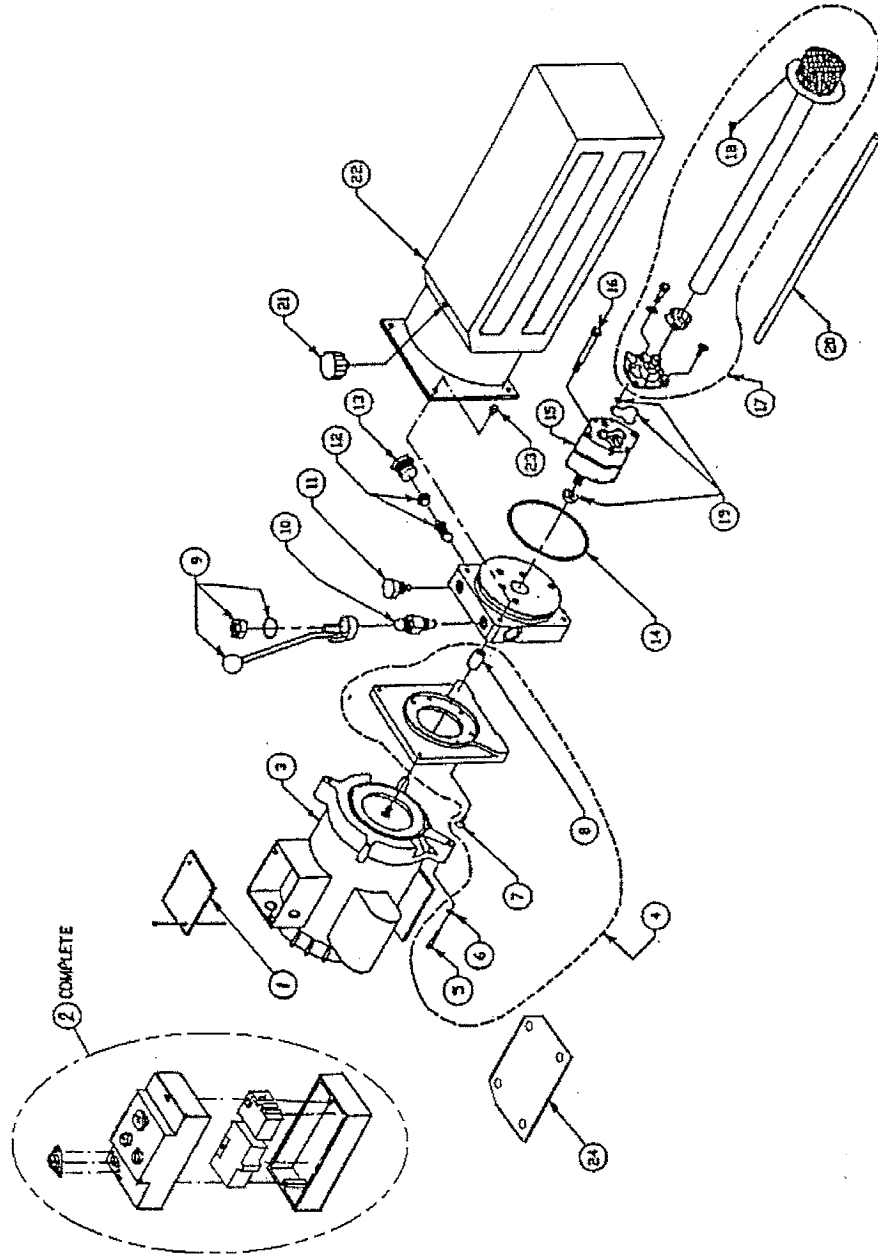
7.5 CABLE ROUTING



7.6 PARTS LIST - CABLE ROUTING

ITEM	QTY.	DESCRIPTION	PART#
1	1	CABLE ASSEMBLY, 314"LG. (LEFT-FRONT)	2-0943
2	1	CABLE ASSEMBLY, 144"LG. (LEFT-REAR)	2-0944
3	1	CABLE ASSEMBLY, 194"LG. (RIGHT-REAR)	2-0945
4	1	CABLE ASSEMBLY, 364"LG. (RIGHT-FRONT)	2-0946
5	8	HEX NUT, 7/8"-14UNF, GR.8	6-0724
6	4	CABLE SPACER, 2"LG.	1-0800
7	4	FLAT WASHER, 7/8" I.D.	6-0725
8	4	CABLE SPACER, 1"LG.	1-0801

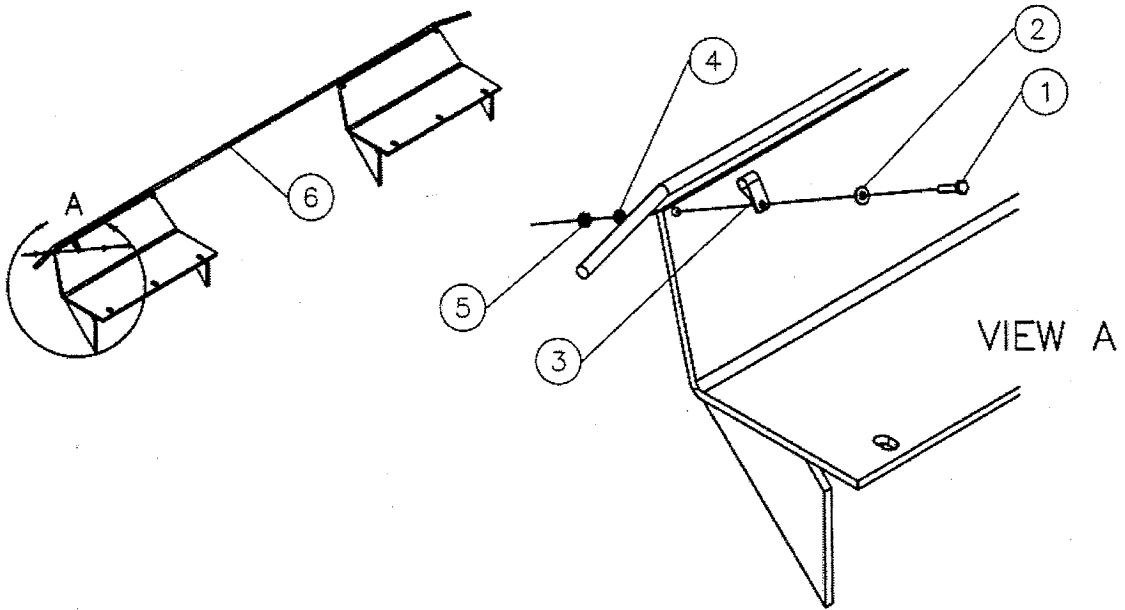
7.7 POWER PACK



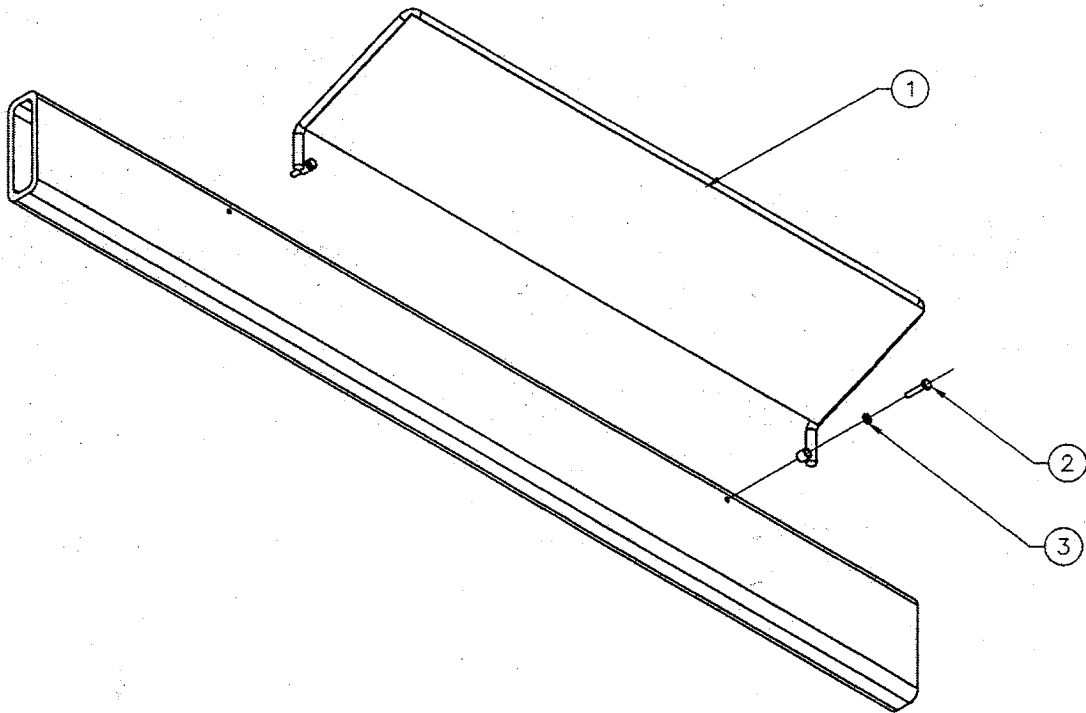
7.8 POWER PACK PART LIST

ITEM	QTY.	DESCRIPTION	PART #
1	1	COVER	6-1289
2	1	CONTACTOR CONTROL BOX - COMPLETE	6-1776
3	1	MOTOR 380V, 3PH, 50 HZ	6-1079
4	1	MOTOR ADAPTER KIT	0-0197
5	4	SOCKET HD.CAP SCW, 1/4"-20UNC X 5/8"LG.	6-1085
6	4	LOCKWASHER, 1/4" I.D.	6-0056
7	4	ALLEN HD. FLAT SCW, 1/4"-20UNC X 3/4"LG	6-1086
8	1	COUPLING	6-0774
9	1	RELEASE BRACKET & HANDLE ASSEMBLY	6-0776
10	1	VALVE CARTRIDGE RELEASE	6-0880
11	1	VALVE CARTRIDGE CHECK	6-1087
12	1	FIXED RELIEF VALVE, RV17	6-1317
13	1	RELIEF VALVE CAP	6-1089
14	1	RESERVOIR "O"RING	6-0875
15	1	PUMP ASSEMBLY	6-2251
16	2	PUMP MOUNTING BOLT	6-1090
17	1	INLET PLUMBING KIT	0-0198
18	1	INLET HOSE / FILTER ASSEMBLY	6-0786
19	1	PUMP "O" RING KIT	0-0199
20	1	RETURN TUBE	6-0783
21	1	BREATHER-FILLER CAP	6-0873
22	1	RESERVOIR	6-0871
23	4	RESERVOIR SCREW	6-1091
24	1	CONTACTOR BRACKET	2-1130

7.9 FRONT AND REAR TOE GUARD PARTS



FRONT TOE GUARD



REAR TOE GUARD

7.10 TOE GUARDS PARTS LIST

FRONT

ITEM	QTY.	DESCRIPTION	PART#
1	4	HEX HEAD BOLT 1/4"-20UNC x 1 1/4"LG.	6-0027
2	4	FLAT WASHER, 1/4" I.D.	6-0060
3	4	CLIP, 1/4" I.D.	6-1230
4	4	LOCK WASHER 1/4" DIA	6-0056
5	4	HEX NUT 1/4"-20UNC	6-0032
6	1	FRONT TOE GUARD	1-1816

REAR

ITEM	QTY.	DESCRIPTION	PART#
1	1	REAR TOE GUARD WELDMENT	2-1436
2	2	HEX HEAD BOLT 1/4"-20UNC x 1 1/4"LG.	6-0027
3	2	LOCKWASHER 1/4" DIA.	6-0056

8 LIFT MAINTENANCE GUIDELINES

Four Post Lifts and Roller Jacks

Safety Instructions

Read operating and safety manuals before using any lift
Do not operate a lift that has been damaged or is in disrepair
Proper inspection and maintenance is necessary for safe operation

General

Check all air and hydraulic lines and fittings for pinch points , damage , cracks or leaks
Check all electrical wiring for pinch points , cracks or damage
Check all moving parts for uneven or excessive wear
Repair or replace all damaged , defective , worn or broken components immediately

Four Post Lifts

- clean roller jack rails weekly (daily if necessary)
- an in-line filter/regulator/lubricator should be installed on all air lines and maintained weekly
- clean front turntable bearing cage with air every month
- if lift is equipped with slide blocks > clean and re-grease slide block channels in each column every two months
- lubricate cable pulleys every three months
- if lift is equipped with rear slip plates > dismantle , clean , touch up deck surface if required , and rotate bearing cage every four months (more frequent if necessary)
- check cables for fraying and adjustment . Lubricate cables with cable or penetrating oil every six months
- lubricate safety shoes every six months
- change hydraulic oil every two years
- periodically check anchor bolts and re-torque if required

Rolling Air Jacks

- an in-line filter/regulator/lubricator should be installed close to the pump . Add a few drops of oil to the air intake weekly if no lubricator is used or when idle for a long period of time
- lubricate roller bearings and roller guide springs every two months
- dismantle and clean lift arms every four months
- clean and lubricate lower cam rollers and hinge points every six months
- clean and lubricate safety mechanism every six months
- change hydraulic oil every two years

Lubrication : Where grease is required > multi-purpose lithium grease
 Where lubricating oil is required > multi-purpose SAE 30 lubricating oil
 Where hydraulic oil is required > ISO 32 10W - non detergent hydraulic oil

CAUTION

ALL SAFETY LADDERS USED ON 4-POST LIFTS ARE PRELOADED.

REMOVING THE BOLT HOLDING THE BOTTOM PORTION OF THE SAFETY LADDER WITHOUT PROPER PRECAUTIONS CAN RESULT IN INJURY.

PLEASE CONTACT CUSTOMER SERVICE FOR PROPER REMOVAL INSTRUCTIONS.

